



# Touchpanel Jr. The Best Micro Touchpanel in the Market

Starting at  
**\$594**

Starting at  
**\$396**



EZ-T4C-FS

**NEW!**

**ACTUAL SIZE  
DISPLAYED**

Introducing ...  
**3.5" - 3.8" Full QVGA  
320 x 240 pixel  
Wide viewing angle**

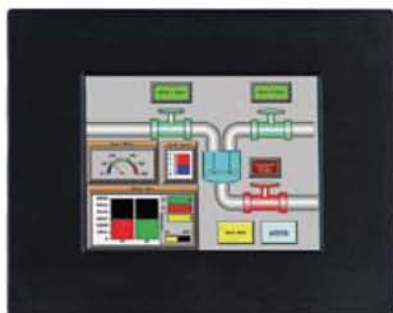
**... PLC Touchpanel JUNIOR**

Minimum  
order of  
**5**



# What Does EZSeries Touchpanel Jr. Offer?

**3.8" Mono and 3.5" TFT Models with 48 Touch Cells**



**1 COM1 Port**

The COM1 port is a RS-232C female 9-pin D-sub connector

**2 PLC Port**

The PLC port is a RS-232C, RS-422A or RS-485A female 15-pin D-sub connector

**3 Ethernet Port (Optional)**

**4 USB Port (Optional)**

**5 Removable Power Connector**



## Unique High-End Features

- On-Line Programming
- Project Simulation
- Four new Unicode Enabled Objects
- Data Acquisition over Ethernet or serial port
- On Screen Recipe Edit
- Save & Edit up to 200 Recipe Variables
- Unique OEM/SI Utility to field upgrade user programs
- Animation Objects
- Unmatched alarm capability with history, count, details and password protected Alarms
- Allows overlapping of the objects
- Allows free-sizing of touch objects
- Built-In Photo Editor, Modem Support
- Multi-state Bitmap object (bit or word selectable)
- Multi-state Indicator/Message object (bit or word selectable) allows up to four embedded data variables in messages
- Bitmap Button object
- Convenience features, such as pick and apply styles and display of address on objects
- Support for importing jpeg, gif, ico images
- Built-in Symbol Factory with over 4,000 symbols
- Screen and object password protection (8 user-defined levels)
- Floating-point numbers to and from PLC
- Forty-character tagnames mapped to PLC addresses
- Import/export tags to/from Excel or CSV files - Export messages to Excel or CSV file
- Export alarms to Excel or CSV file
- Scalable meters and bar graphs
- Floating point support for Meters, Bar Graphs, PID and Line Graphs
- Screen Thumbnail View

## Drivers Supported

- Allen-Bradley DF1 Half and Full Duplex (PLC-5, SLC 500, MicroLogix 1000, 1200 and 1500)
- DH485/AIC/AIC+ for MicroLogix 1000, 1200, 1500, SLC500, 5/01, /02, /03
- Allen-Bradley Ethernet I/P for ControlLogix
- Allen-Bradley DF1 over Ethernet
- Aromat Mewtocol COM
- Baldor
- Control Techniques - Unidrive 2-wire, 4-wire (binary)
- Control Technology Corp. (CTC) - CTC2600, 2700 and 5100 (CTC Binary)
- EZPLC
- GE Fanuc SNPX (90/30, 90/70)
- GE SRTP over Ethernet
- Idec Computer Link
- Omron Host Link (C200 and C500)
- All Mitsubishi FX Series
- Modbus TCP/IP Ethernet
- Modicon MODBUS RTU
- Parker Hannifan
- Siemens S7 MPI Adapter series PLCs
- Square D Symax - 300 Series CPU, 400 Series CPU (Symax)
- Support for ST & Long File types in AB Drivers
- Support for full range of I/O and direct addressing of I/O for DF1 and MicroLogix
- Driver for SLC 5/05 over Ethernet (legacy Ethernet I/P)
- Support ControlLogix and Compact Logix Tag Names
- Support for Binary Files (B3:0/0) using shortcut method of B3/0, B3/1, B3/2
- Texas Instruments - TI5x5 Series, TI505, TI545-1102, TI545-1104
- All AutomationDirect DirectLOGICPLCs
- Yaskawa (Memobus protocol)

All Product names, trademarks and registered trademarks are the property of their respective manufacturers or legal holders. EZAutomation disclaims any proprietary interest in the marks or names of others. All prices are US List prices and are subject to change without notice. All competitors' prices and features are from their online stores or publications as of May 1st, 2007, or from tests conducted by EZAutomation

## Specifications

	EZAutomation Touchpanel Jr 3.8"	EZAutomation Touchpanel Jr 3.5"
Display Type	STN Mono	TFT Colour
Pixels	320mm x 240mm	320mm x 240mm
Operating Temperature	TBA	TBA
External Dimensions	Front Panel Bezel (W5.06 x H4.08)	Front Panel Bezel (W5.06 x H4.08)
Panel Cut-out	(D) 1.87" (W) 4.72" (H) 3.70"	(D) 1.87" (W) 4.72" (H) 3.70"
Display Brightness	TBA	TBA
Touch Screen	48 Resistive Cells	48 Resistive Cells
Power Input	24VDC - Max 6W	24VDC - Max 6W
Weight	TBA	TBA
User Memory	TBA	TBA
Ram Modules	TBA	TBA
Flash Modules	TBA	TBA
Serial Port	2 Ports (RS232/RS422/RS485) D-Sub	2 Ports (RS232/RS422/RS485) D-Sub
Optional Ethernet	Ethernet/IP for ControlLogix, MicroLogix and SLC500, Modbus TCP/IP, SRTP.	Ethernet/IP for ControlLogix, MicroLogix and SLC500, Modbus TCP/IP, SRTP.
Optional USB	YES (Programming)	YES (Programming)