

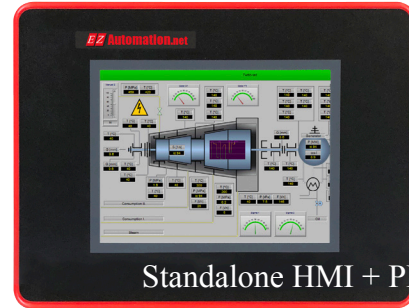
EZ12 Series 6" TFT Color Panels

6" Color EZ12 Series (5.7" TFT)

EZ12 Series 6" panels have a 5.7" diagonal color TFT, 65k colors, 320 x 240 screen resolution, 2 Serial Ports, 2 USB Ports, Built in Ethernet, 1 MicroSD card slot. All Serial/Ethernet Drivers included.

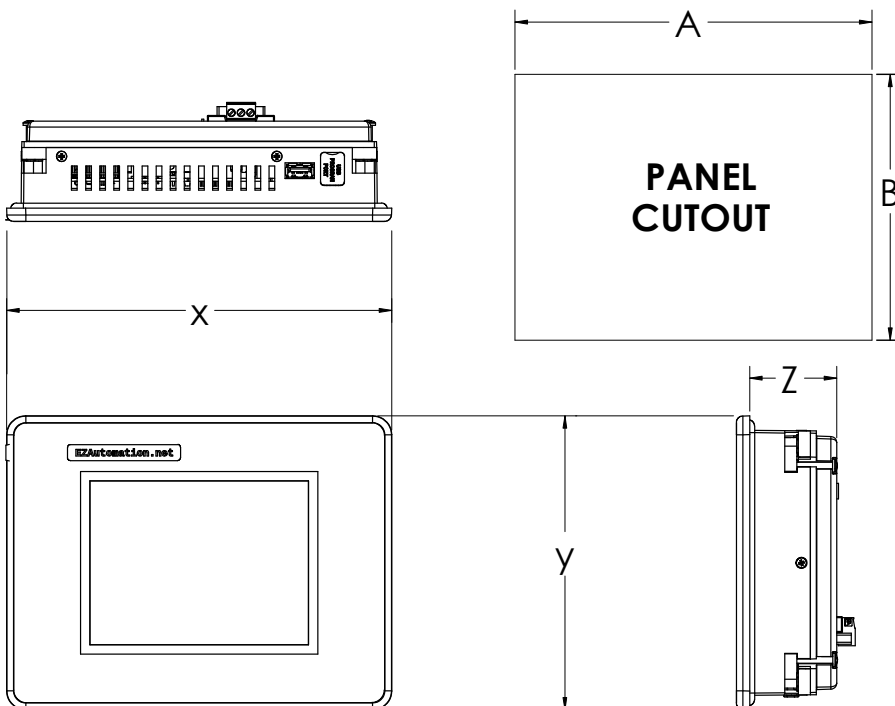
EZ12 Series Touchpanel feature:

- User level hardware & software private labeling
- All Serial and Ethernet Drivers included
- 1 Ethernet Port 10/100 Base T
- USB Type B port for programming
- USB Type A port for Data Logging and program upload
- MicroSD card slot for Datalogging
- 2 Serial Ports (1 Rs232, 1 Rs232/422/485)
- 65K Colors
- 320 x 240 pixel resolution
- NEMA 4/4X (Indoor)
- 4 Year Warranty
- 2.10" (53.34mm) installed depth
- 4,000 symbols library
- Programmed with All new EZTouch Editor



Standalone HMI + PI

EZ12-T6C-E



EZ12 PANEL DIMENSIONS

UNIT SIZE	X	Y	Z
6"	8.05 [204.50]	6.15 [156.20]	2.10 [53.34]
7"	8.05 [204.50]	6.15 [156.20]	1.82 [46.23]
8"	10.90 [276.76]	8.75 [222.25]	1.87 [47.60]
10"	13.59 [345.06]	10.62 [269.90]	1.82 [46.23]

PANEL CUTOUT DIMENSIONS

UNIT SIZE	A	B	DEPTH
6"	7.47 [189.73]	5.57 [141.48]	3.60 [91.44]
7"	7.47 [189.73]	5.57 [141.48]	3.32 [84.33]
8"	9.17 [232.92]	7.04 [178.82]	3.38 [85.68]
10"	11.87 [301.50]	8.90 [226.00]	3.32 [84.28]